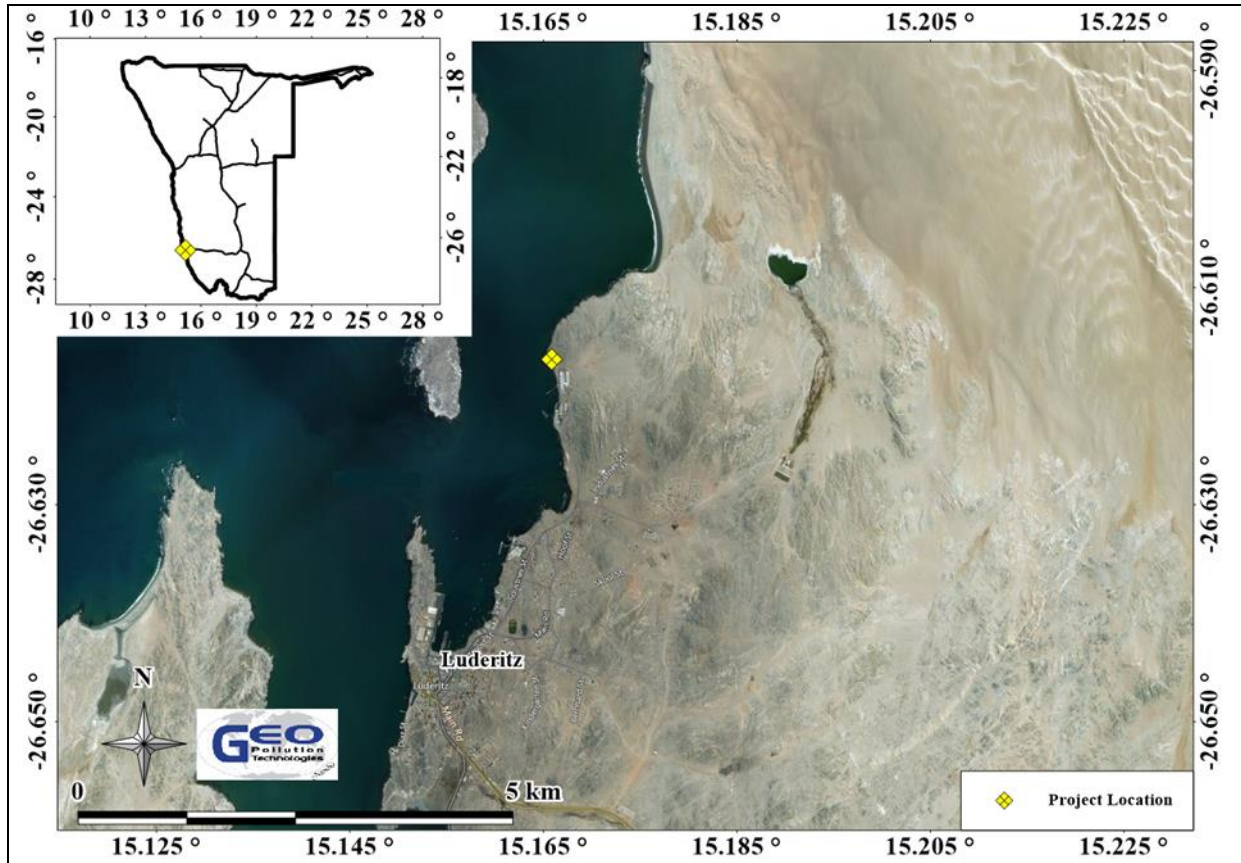


ENVIRONMENTAL ASSESSMENT FOR THE OPERATIONS AND EXPANSION OF AN EXISTING ABALONE MARICULTURE FARM, LÜDERITZ

PROJECT LOCATION



For any additional information regarding the project, or to register as an interested and / or affected party, kindly contact the project team as per the contact details below.

Project Contact Details

Project Team: Quzette Bosman / André Faul

Phone: +264 (0)61 257 411

Fax: +264 886 26 368

Email: hangana@thenamib.com