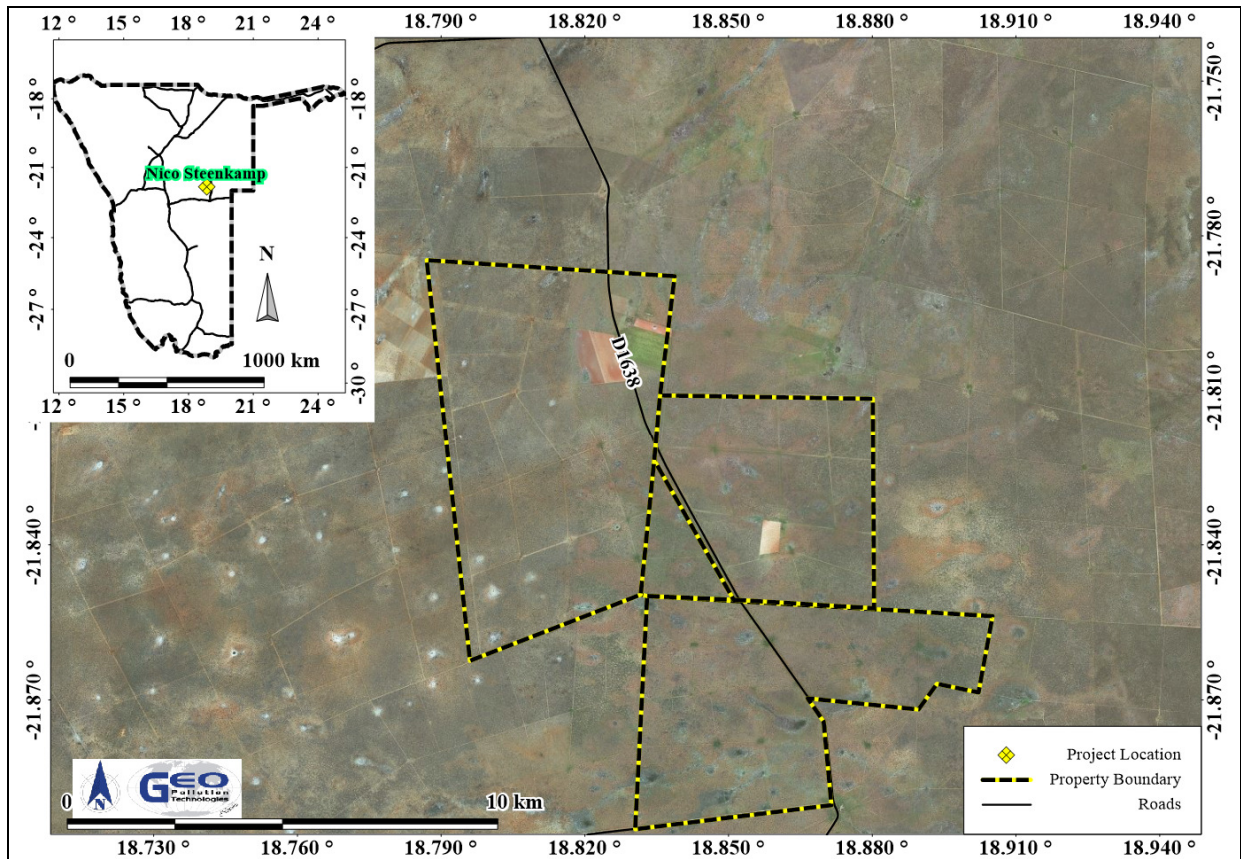


**ENVIRONMENTAL IMPACT SCOPING ASSESSMENT AND ENVIRONMENTAL MANAGEMENT PLAN FOR THE CROP CULTIVATION ACTIVITIES ON THE FARMS TOKAT NO. 343, CONELLAN NO. 247, OWINGI NO. 246, OMAHEKE REGION
PROJECT LOCATION**



For any additional information regarding the project, or to register as an interested and / or affected party, kindly contact the project team as per the contact details below.

Project Contact Details

Project Team: Quzette Bosman, Jannie Van Der Merwe
Phone: +264 (0)61 257 411
Fax: +264 886 26 368
Email: gpt@thenamib.com